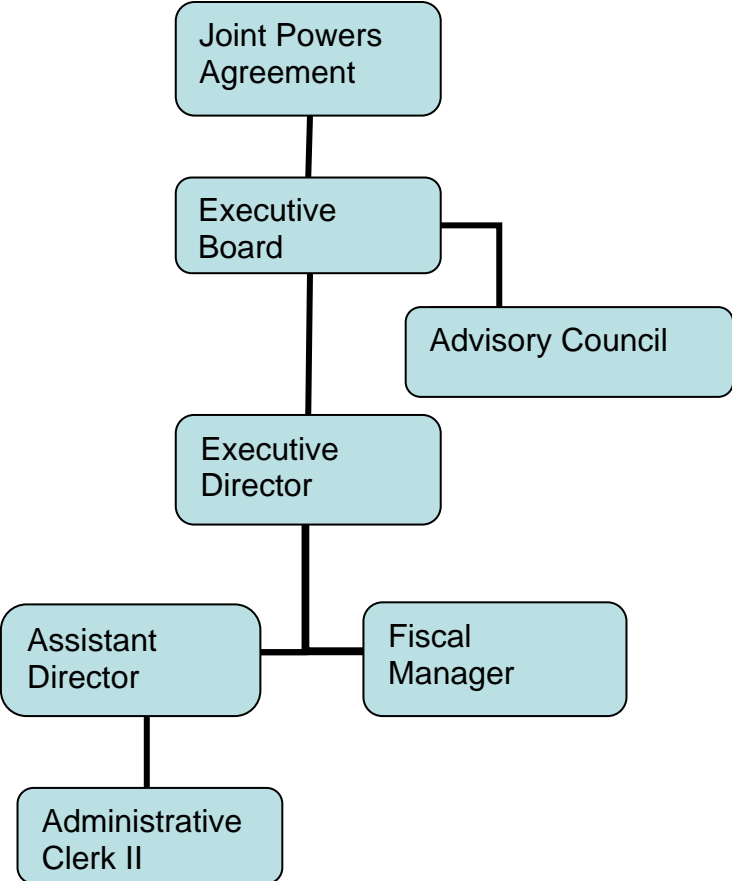


---

# Planning and Service Area 2 Area Agency on Aging

## Organizational Chart

---



**Planning and Service Area 2 Area Agency on Aging**  
**ORGANIZATION CHART - ADMINISTRATIVE STAFF FUNDING ALLOCATION**

	Total	Title III				CBSP	HICAP	ARRA
		B	C-1	C-2	E			
Executive Director	100%	34.08%	20.00%	20.00%	5.50%	11.66%	5.07%	3.69%
Administrative Manager	100%	34.08%	20.00%	20.00%	5.50%	11.66%	5.07%	3.69%
Fiscal Manager	100%	34.08%	20.00%	20.00%	5.50%	11.66%	5.07%	3.69%
Administrative Clerk II	100%	34.08%	20.00%	20.00%	5.50%	11.66%	5.07%	3.69%